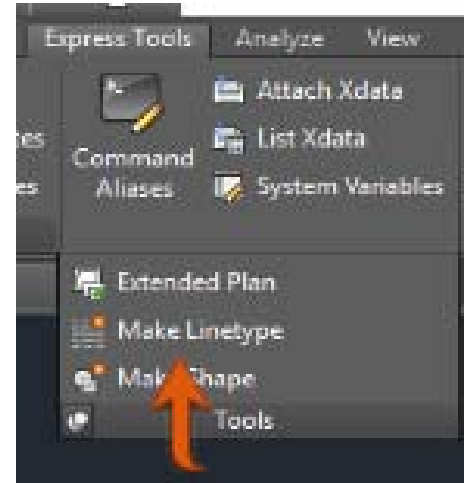


MKLTYP (Express Tool)

By this command, we can create our own autocad line type. Creates a linetype definition based on selected objects and stores them in a specified linetype definition (LIN) file.

A linetype is a repeating series of dashes, dots, shapes, and text objects. With the standard AutoCAD PLINE, LINE, POINT, TEXT, and SHAPE commands, draw an approximation of your linetype; then select the objects at the Select Objects prompt in MKLTYP. You can define both complex and simple linetypes with MKLTYP. To define a complex linetype, include shape or text objects in your selection. With MKSHAPE you can create shapes simply by selecting objects.



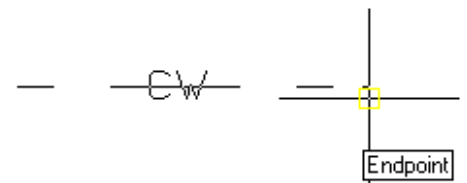
1. Access from ribbon or AutoCAD Menu: **Express>Tools>Make Linetype**. Or Command: **MKLTYP**

2. Type your line type file name, then click save. This file name is what you'll see when you load the .lin file in Windows dialog box.

3. Type your line type name, then press [enter]. This line type name is what you'll see in the name list.

4. Type your line type description (optional), then press [enter]. This description should be able to give you a brief description about this line type.

5. Specify starting point and end point and end point of the line



6. Select objects. Select a line, polyline, point, shape, or text object, then press [enter].

Example

Create a dashed cold water linetype.

After specifying the file name, linetype name and description, select points to show the start points and end points for line definition:

Specify the line and text objects to be used to define the linetype:

The linetype is loaded and is ready to use:

