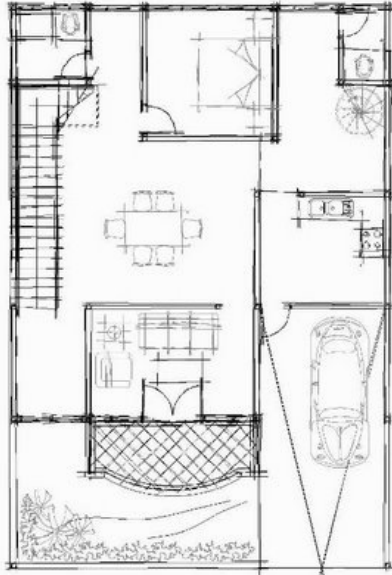


### CREATING SKETCH FROM AUTOCAD DRAWING

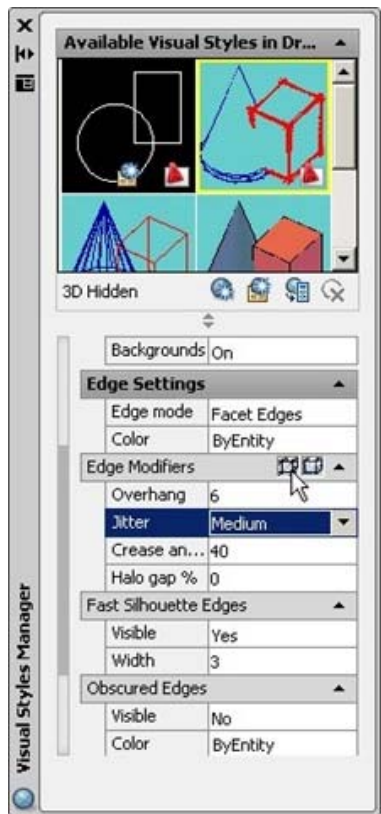
#### 1. Creating Sketch from AutoCAD Drawing



Images on the left looks like hand-drawn sketch. It's actually an AutoCAD drawing, with a little tweak on visual styles.

AutoCAD has this capability since AutoCAD 2007., when Autodesk made major changes on AutoCAD 3D modelling.

- Open visual styles manager palettes. (View Menu - Visual Styles - Visual Style Manager - **Sketchy**) Apply this visual style to your viewport.



Now on the edge modifiers group, activate overhanging edge and jitter edge. Tweak the overhang value and jitter if necessary.

We can see the effect immediately and apply this to any existing visual styles, except for 2D wireframe. We can also plot this effect to your plotter.

