

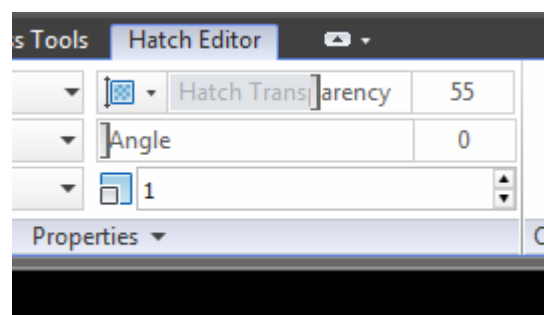
## HATCH TRANSPARENCY

### HATCH TRANSPARENCY

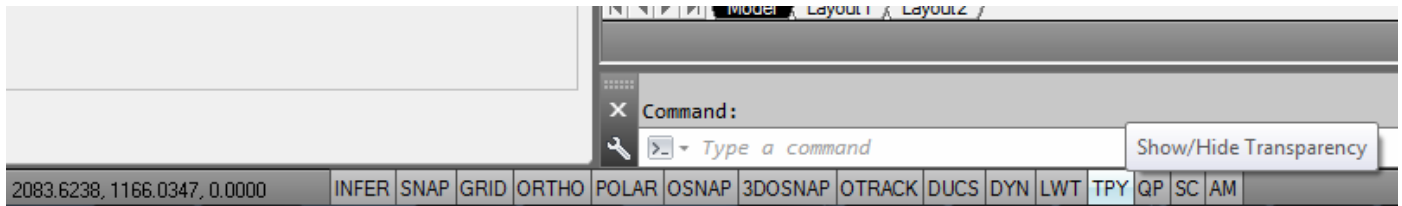
A transparent hatch is most readily experienced when using the Solid hatch pattern, although any pattern can be used.



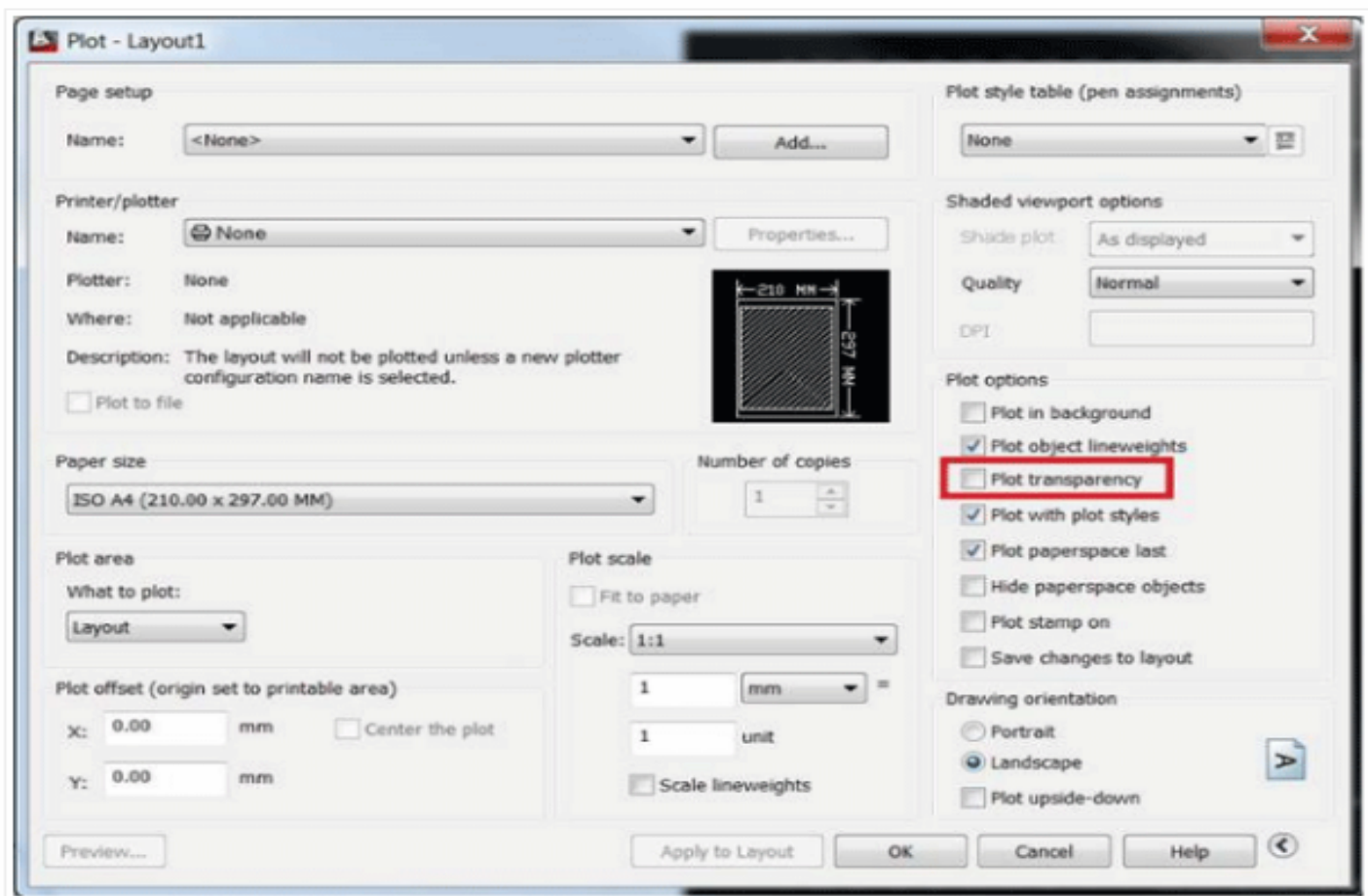
- Select Hatch and control the transparency value from 0 to 90 in Ribbon.



- Type command TRANSPARENCYDISPLAY and set to 1 OR Switch ON "TPY" for Transparency.



You can simply control the plot transparency in the Plot/Page setup dialog box. Ticking the box checkbox on Plot Transparency specifies whether object transparency is plotted.



When plotting a drawing with transparencies, be sure to check the box in the Plot dialog box to "Plot Transparency." (Otherwise, you're going to have a very wet plot and need another toner cartridge right away.)

More Details please contact: Focus CAD/BIM Team 2017-18  
[www.focuskuwait.org@gmail.com](mailto:www.focuskuwait.org@gmail.com)

[www.focuskwt.net](http://www.focuskwt.net)