


## SETBLAYER (Command)

Changes property overrides for color, linetype, linewidth, material, plot style, and transparency to ByLayer for selected objects and inserted blocks on unlocked layers.

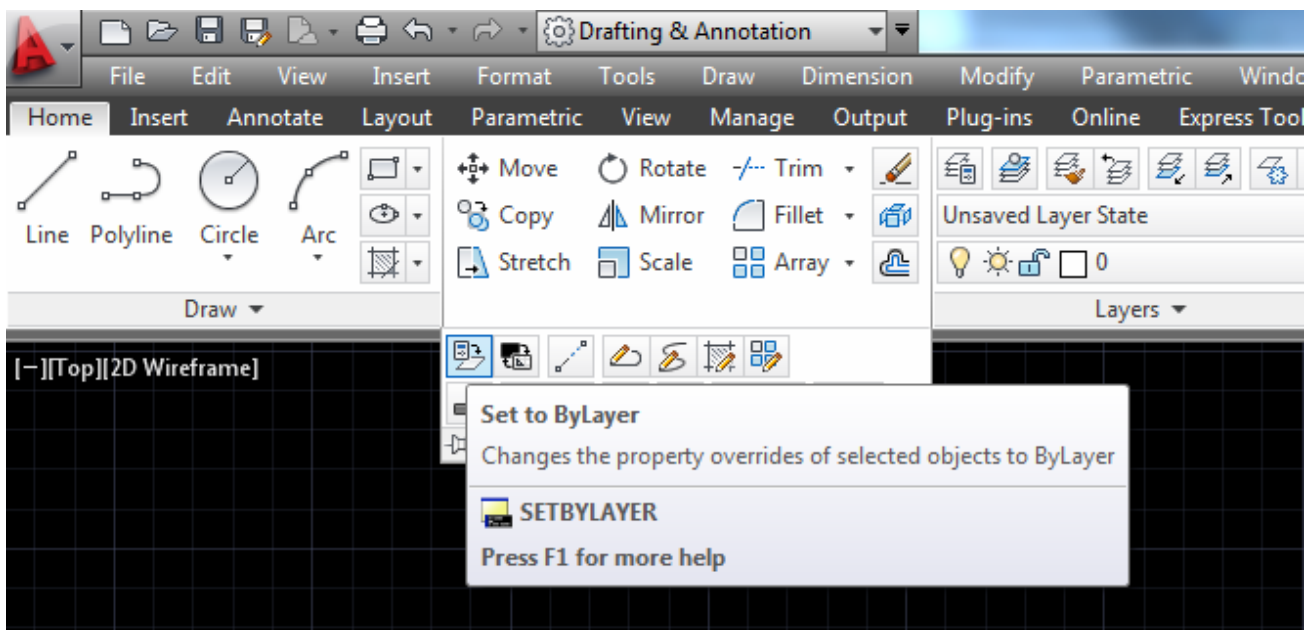
### Access Methods



### Button

 Ribbon: Home tab > Modify panel > Set to ByLayer

 Menu: Modify > Change to ByLayer



The following prompts are displayed. They differ, depending on whether objects are selected when you start the command.

### If no objects are selected

#### Select objects

Specifies which object should inherit layer properties (ByLayer).

### Settings

Displays the SetByLayer Settings dialog box, in which you can specify which object properties are set to ByLayer.

## If objects are selected

### Change ByBlock to ByLayer?

Specifies whether to change ByBlock properties to be ByLayer.

### Include blocks?

Specifies whether to apply changes to blocks.

## SETBYLAYER SETTINGS DIALOGUE BOX

### List of Options

The following options are displayed.

#### Color

Changes the color of selected objects to ByLayer.  
(SETBYLAYERMODE=1)

#### Linetype

Changes the linetype of selected objects to ByLayer.  
(SETBYLAYERMODE=2)

#### Lineweight

Changes the lineweight of selected objects to ByLayer. (SETBYLAYERMODE=4)

#### Material (not available in AutoCAD LT)

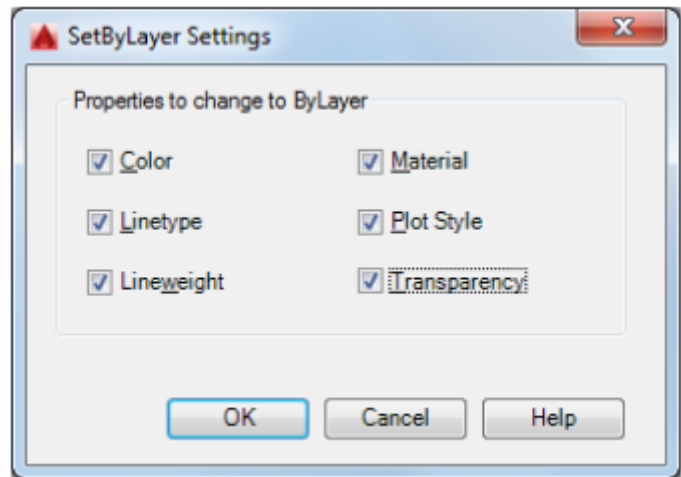
Changes the material of selected objects to ByLayer. (SETBYLAYERMODE=8)

#### Plot Style

Changes the plot style of selected objects to ByLayer. This option is available in named plot style drawings. (SETBYLAYERMODE=16)

#### Transparency

Changes the transparency value of selected objects to ByLayer.  
(SETBYLAYERMODE=128)



**More Details please contact: Focus CAD/BIM Team 2017-18**

**[www.focuskuwait.org@gmail.com](mailto:www.focuskuwait.org@gmail.com)**

**[www.focuskwt.net](http://www.focuskwt.net)**